

VENUS CLOSE SLOUGH, SL2 2PL

Welcome to this charming property located on Venus Close in the heart of Slough. This delightful block of flats offers a cosy setting with 1 reception room, 2 bedrooms, and 1 bathroom, providing the perfect space for comfortable living.

£275,000

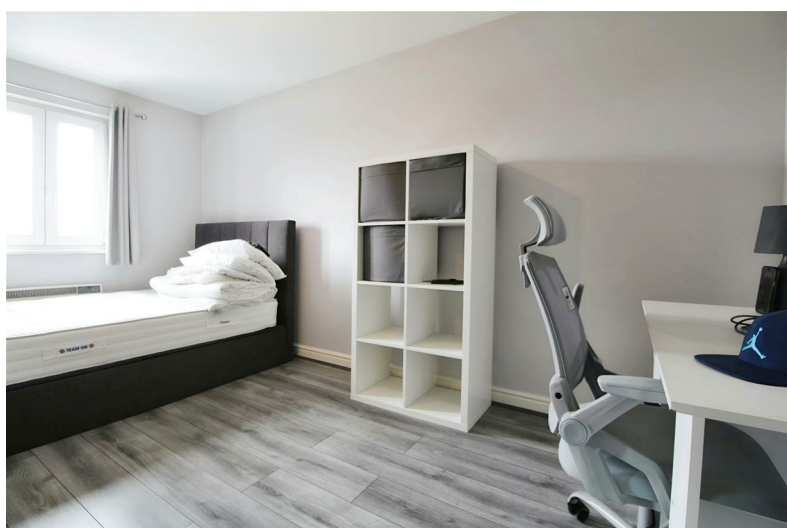
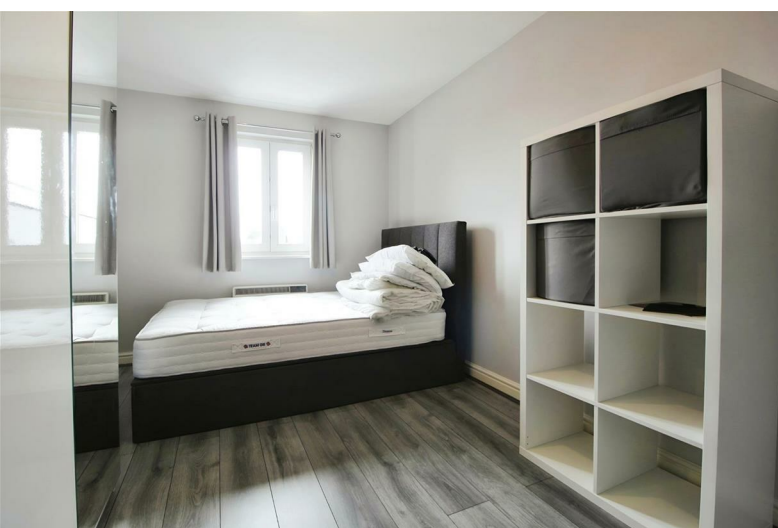


The property boasts a convenient parking space, ensuring you never have to worry about finding a spot after a long day. Situated just 1.2 miles from Burnham Train Station, commuting is made easy for those who need to travel for work or leisure.

With its close proximity to local shops and schools, this property offers a wonderful opportunity for families or individuals looking for a vibrant community to call home. Whether you're looking to settle down or invest in a promising location, this property on Venus Close is sure to capture your heart.

Don't miss out on the chance to make this lovely property your own and experience the best of what Slough has to offer. Book a viewing today and step into your new beginning at this fantastic location.

- Available now
- 1.2 miles from Burnham Train Station (Main Paddington Line and Crossrail Station - 20 minutes to Central London)
- Residents parking
- Close to local shops
- Electric heating throughout
- 0.2 miles from Lynch Hill School Primary Academy



cameron

king
ESTATE AGENTS

411 Bath Road, Slough, SL1 5QL
t: 01628 667442
e: sales@cameronking.co.uk



rightmove 

Zoopla

 **PrimeLocation.com**